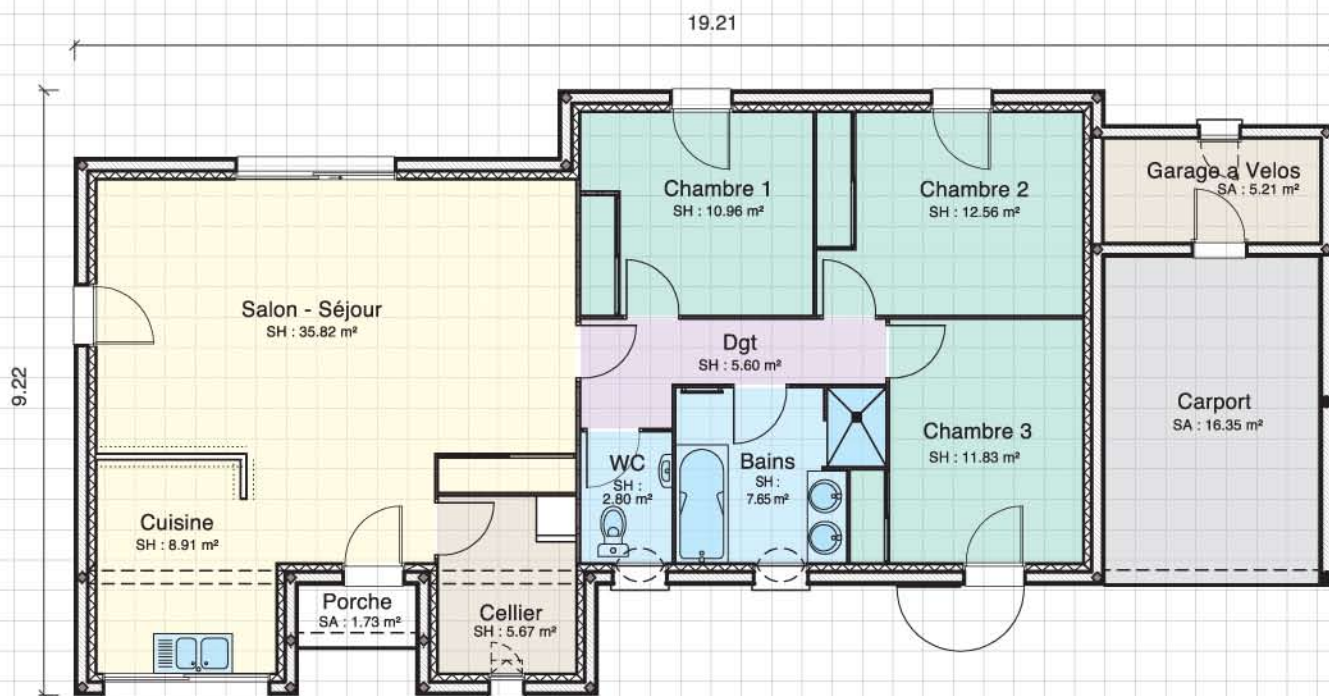


▶ C\_05

REFERENCE



CONTEMPORAINE



▶ Surface habitable ..... 101,80 m<sup>2</sup>

▶ Surface porche ..... 1,73 m<sup>2</sup>

▶ Surface carport ..... 16,35 m<sup>2</sup>

▶ Surface garage vélos ..... 5,21 m<sup>2</sup>